

# "Incubi di Cath Lab: affrontare e risolvere le sfide"

*Nuova attività della DCB Academy*



## **-Panoramica del progetto:**

Discutere le complicazioni della vita reale nel laboratorio di cateterismo e scambiare esperienze tra di noi per affrontare casi reali

## **-Scopo e obiettivi:**

Per trarre informazioni dalle nostre sfide e sviluppare strategie mirate per prevenirle.

## **-Responsabile del progetto:**

Dott.ssa Rima Chaddad

## **-Presentatore:**

Membri della DCB Academy

## **-Data:**

Mensile

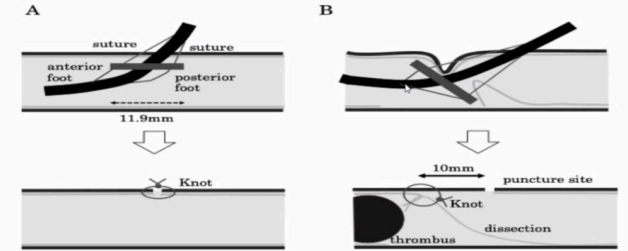
# "Incubi di laboratorio di cateterismo: affrontare e risolvere le sfide"

Nuova attività della DCB Academy

What would you do in this situation?

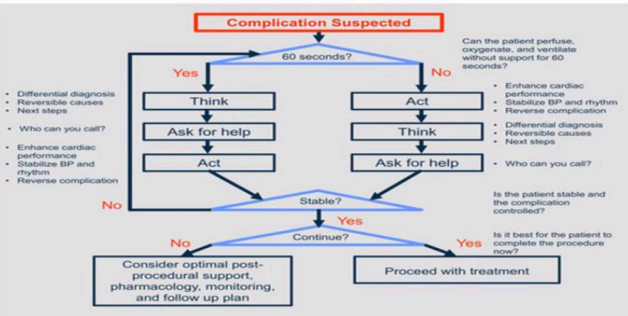


CATH LAB NIGHTMARES



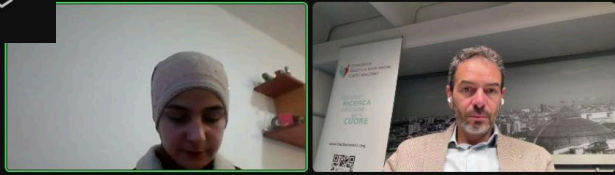
- Illustration of the common femoral artery (CFA) occlusion.
- (A) shows the feet length and the proper deployment of ProGlide, which is positioned with both the anterior and posterior feet against the anterior wall of the CFA.
- (B) shows an illustration of the occlusion mechanism. Because the puncture angle is less than 45°, the anterior foot stitched at the anterior arterial wall twice, and the posterior foot dissected the posterior arterial wall.

Percutaneous Coronary Intervention Complications: Algorithms for Successful Recognition and Management

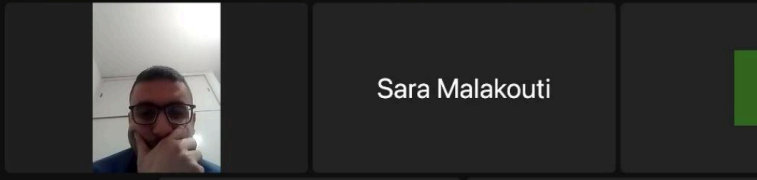


- Muhammad...
- Bernardo Cor...
- Sara Malakouti
- BK
- Rima
- Jegan Sivalin...

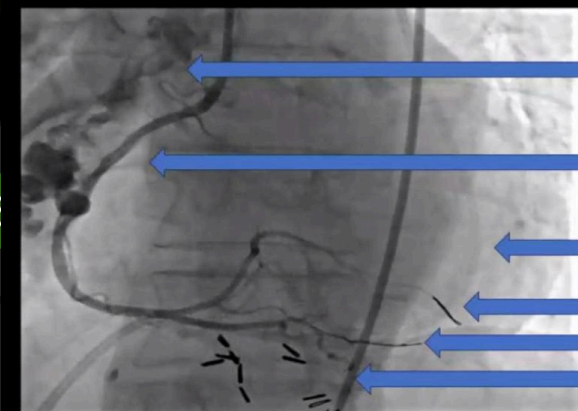
- Bernardo Cor...
- Muhammad...
- Sylwia Iwafic...
- Rima
- Dr Krupal



- S
- Bernardo Cc
- Amanda Roc
- Antoine
- Sara Malak
- rimach.999



- Sara Malakouti
- Leontin's iPhone
- K



- JR4-Radial approach
- Balloon 3.5\*20
- Pericardiocentesis
- Sion wire 1
- Sion wire 2
- JR4-Femoral approach